



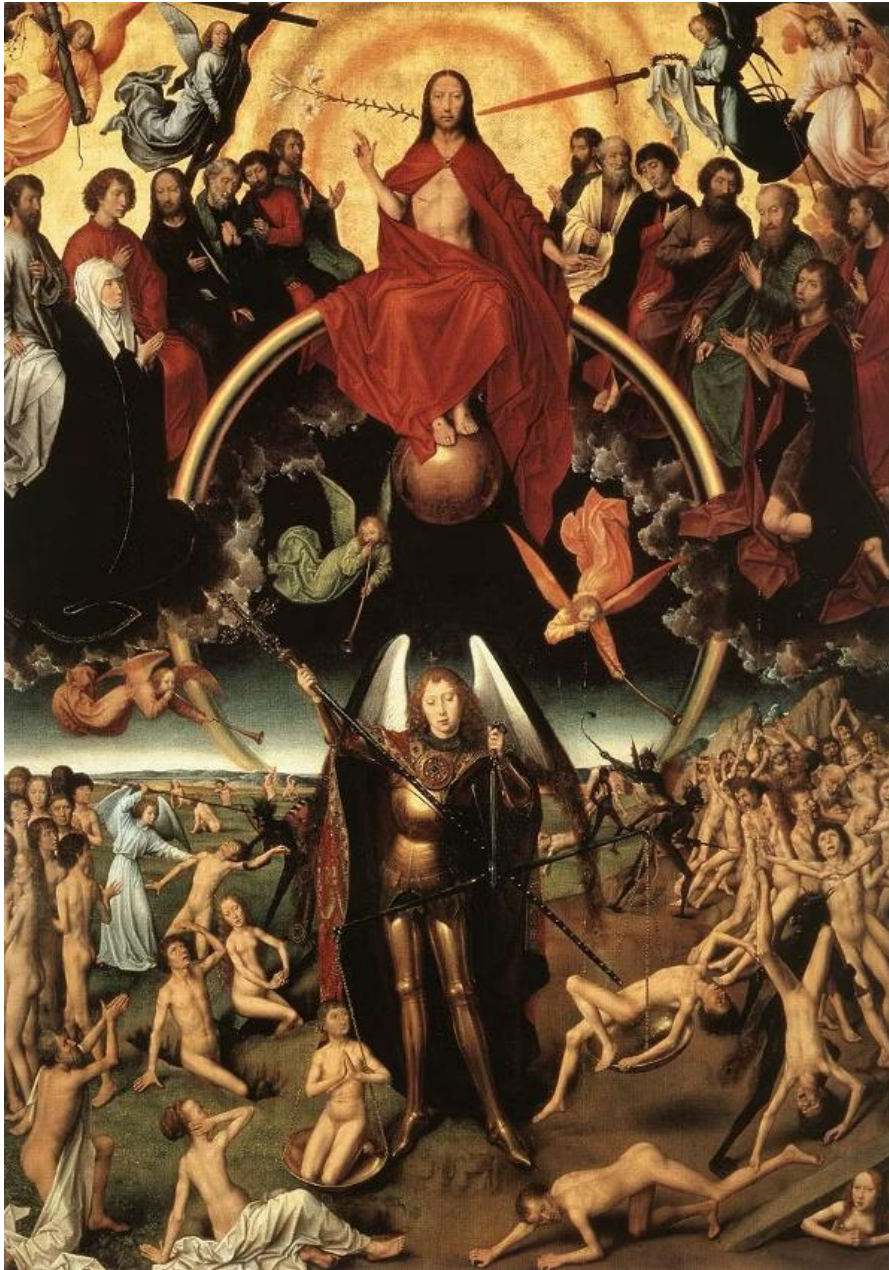
# HOLY FAMILY

## CATHOLIC CHURCH

830 MAIN STREET, HONOLULU, HI 96818

808.422.1135 | [www.holyfamilyhonolulu.org](http://www.holyfamilyhonolulu.org) | [info@holyfamilyhonolulu.org](mailto:info@holyfamilyhonolulu.org)

**21<sup>ST</sup> SUNDAY IN ORDINARY TIME C | AUGUST 24, 2025**



Hans Memling's, "Last Judgement Triptych" (central panel) (c. 1467–1471). Muzeum Narodowe, Gdansk, Poland.  
[Public Domain]

### REGULAR MASS SCHEDULE

#### MONDAY - FRIDAY

8 a.m. Daily Mass

#### SATURDAY

3:30 – 4:30 p.m. Confession  
5 p.m. Vigil Mass for Sunday

#### SUNDAY

8:30 a.m.; 11 a.m.; and  
7 p.m.

#### PARISH OFFICE Hours

Monday – Thursday  
9 a.m. – 12:30 p.m.

### 8/11/25–8/17/25 Weekly Collection Summary

**Total: \$5,452.15**

#### Breakdown:

5 p.m. Vigil (Saturday): \$686.53  
8:30 a.m. Sunday: \$2,089.00  
11 a.m. Sunday: \$719.00  
7 p.m. Sunday: \$738.00  
Candle Offerings: \$134.00  
Miscellaneous: \$740.00  
Online Giving: \$345.62

### PARISH STAFF

Pastor  
Deacon  
Deacon  
Academy Principal  
Liturgy Coordinator  
Office Coordinator  
Pastor's Assistant

REVEREND DARIO RINALDI  
SAVILI A. BARTLEY  
MIKE BROWN  
MS. CELESTE AKIU  
MR. TOM GRANT  
MR. JEFF FONTANILLA  
MRS. PAULA MANZ

PARISH OFFICE: (808) 422-1135 [www.holyfamilyhonolulu.org](http://www.holyfamilyhonolulu.org) | [info@holyfamilyhonolulu.org](mailto:info@holyfamilyhonolulu.org)

HOLY FAMILY CATHOLIC ACADEMY: (808) 423-9611 [www.hfcawahaii.org](http://www.hfcawahaii.org) | [info@hfcawahaii.org](mailto:info@hfcawahaii.org)

Looking for a past bulletin? Please visit the post archive on our parish website or our parish Facebook page or scan the adjacent QR code for any of our past and latest news, announcements and updates you may have missed.



## LAST DAY OF REGISTRATION FAITH FORMATION – AUG. 24, 2025



## JUBILEE CROSS

The Jubilee Cross will be present at our parish throughout the month of **September**. All parishioners and visitors are invited to venerate the Jubilee Cross and take part in this special grace of the Jubilee Year.

A Jubilee indulgence may be obtained by visiting and venerating the Jubilee Cross when the ordinary conditions are met, namely, detachment from sin, sacramental confession, reception of Holy Communion, and prayers for the intentions of the Holy Father (one Our Father, Hail Mary, and Glory Be).



## +FATHER SYDNEY FERNANDES (1934-2025)

### Funeral Services

**Date:** Saturday, September 6, 2025

**Place:** St. Roch Church, Kahuku

8:30 a.m. - Family Viewing

9:00 a.m. - Public Viewing

10:00 a.m. - Funeral Mass

(Fr. Joseph Diaz – Celebrant)

11:00 a.m. - Lunch

1:00 p.m. - Burial at Hawaiian Memorial

## TUESDAY CATECHESIS AUGUST 26, AT 6:00 P.M.

This week, we begin a series of talks on the liturgical details of the Mass and how we as a congregation can participate in the act of worship.

Bring your Bible and come ready to grow in faith!

## PASTOR'S CORNER

*My Dear Family,*

*In a small part of Greece, there is a peninsula called Mount Athos. On this peninsula, cut off from the rest of Greece except for a narrow bridge of land, there are 2,000 Christian monks living lives of devoted prayer and servile work in isolation from the world. This 1200-year-old monastic community is one of the holiest places on earth, where monks spend their lives closer to God than most of us could ever dream. They share all things in common, and so they have no money and no occasion for greed. There are no women allowed on the peninsula, and so there is no occasion for indecency. They do not speak except when discussing work or the things of God, and so there is no occasion for loose speech. They have no internet or newspaper, and so there is no occasion for distraction.*

*And yet, every day, for hours on end, the prayer of these men remains the same: “**Lord Jesus Christ, have mercy on me, a sinner.**” If these monks, who are truly holy, consider themselves sinners, how much more should we consider our own sins? If these men beg for God’s mercy day in and day out, how much more do we need to ask for God’s mercy? Strive to enter by the narrow gate, for the Lord does not tell us how much we must cry out to him. Always outdo yourself in your reliance on God.*

## OFFICE CLOSURE

Our parish office will be **CLOSED** on **Monday, September 1, 2025**, in observance of Labor Day.

## ONLINE GIVING

Donate easily via our parish website or scan the QR code. You can also text “OHANA” to 73256 to give through your mobile device. Standard text message rates may apply.

